



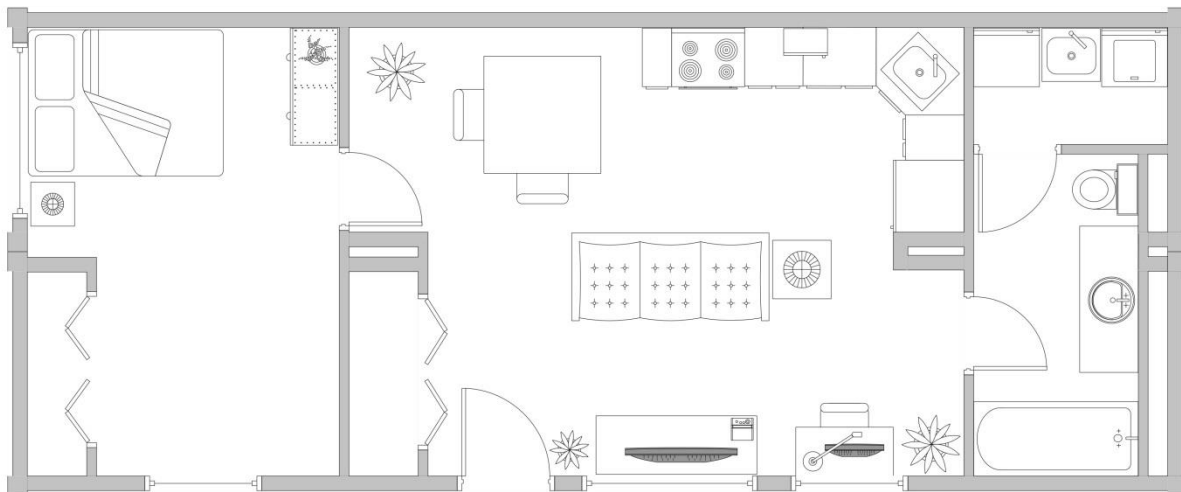
BLOCKSMODULAR

— C O R P . —

ONE BEDROOM & ONE BATHROOM

MODEL A

The “scalable” nature of the design allows for any multifamily projects sizes, big or small. By keeping the designs simple & customization to a minimum, your costs are significantly reduced compared to other traditional builders and modular assemblers.



ONE BEDROOM & ONE BATH
(OPEN LIVING ROOM & KITCHEN CONCEPT)
MODEL A



© 2014 Blocks Modular Inc.

KEY FEATURES



- Full bathroom (includes a full bathtub)
- Large windows & increased lighting
- Individual room air conditioning & heating controls (optional)
- Telephone, internet & cable availability
- Large open concept for living room & kitchen
- Washer & dryer room
- Wheelchair accessibility (option)
- Balcony & staircase options (speak to a Blocks Modular rep. for more details)
- 1 year warranty on all products
- CSA approved

SPECS

General

- Wood frame exterior walls & ceiling
- R-19 fiberglass insulation
- ½" drywall finish (with paint)
- R-10 spray foam (under module)
- Standard low-e vinyl windows
- Hollow core interior doors
- Grade carpet in living areas
- Electric water heater
- Overhead light fixtures

Bathroom

- 24" Bathroom Vanity
- Standard Toilet
- Standard bathtub (option: walk-in tub)
- Medicine Cabinet

Kitchen

- Appliances (electric range, microwave)
- Vinyl sheet flooring
- Standard full size cabinets
- Single sink[/one-half]

\$ Call for quote

© Blocks Modular Inc.

Drawings are for explanation purpose only and may vary from actual finished product. Consult with the Blocks Modular team when ready to develop your designs for the project. Unauthorized distribution or duplication of this drawing is not permitted without expressed written consent from Blocks Modular Inc.

www.blocksmodular.com

ALBERTA 1.403.996.1544
Toll Free 1.800.532.2351

© 2014 Blocks Modular Inc.